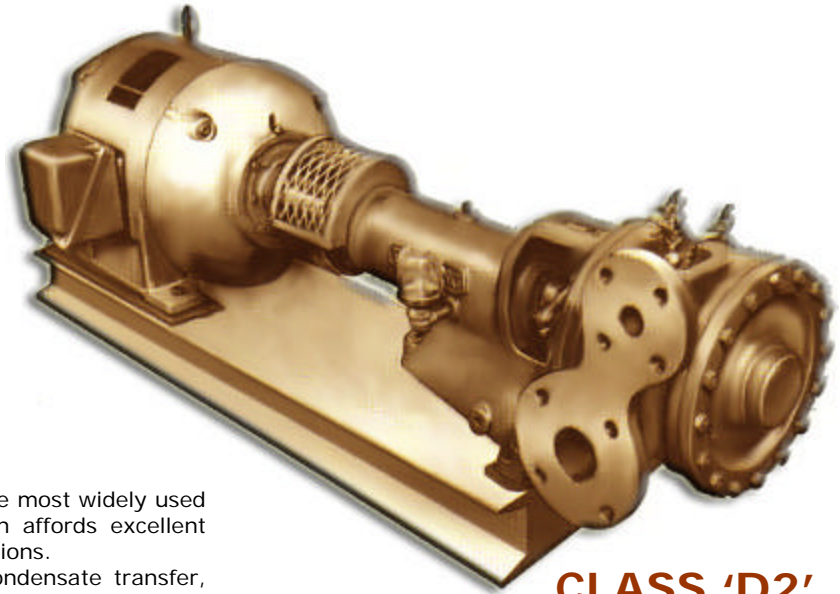


**DARLING**

Since 1888

**Class 'D<sub>2</sub>'  
centrifugal pumps**

Darling Class D2 two-stage centrifugal pumps are most widely used in boiler feed service. Furthermore their design affords excellent adaptability to many other high pressure applications. Class D2 pumps are particularly suitable for condensate transfer, and booster service. Class D2 pumps can be equipped with various types of drives. Motor, engine or stream turbine.

**PUMP FEATURES**

**CASING:** Heavy cast iron with integral suction and discharge flanges. Cross over passage and volutes smooth finished and shaped for maximum efficiency.

**IMPELLERS:** Daralloy opposed enclosed type, arranged to permit suction pressure only on packing gland. Smooth unobstructed inlet for maximum efficiency

**SHAFT:** Stainless steel, shouldered to position bearings. Increased diameter between bearings to reduce flexing. Keyed and tapered for rigid fit of impellers.

**BEARINGS:** Heavy duty type single race oil-lubricated ball bearings.

**PACKING GLAND:** Bronze with swing type adjusting bolts for easy access to packing.

**FRAME:** Box type one-piece casting comprising head, bearing housing, deep stuffing box, integral drip pan with drain connection. Three-point mounting eliminates distortion.

**BASE:** Standard base is heavy structural steel designed to take pump and driver and drilled for anchor bolts.

Pump parts are stud and spigot mounted for permanent alignment of rotating element. Design permits removal of entire liquid end without disturbing piping.

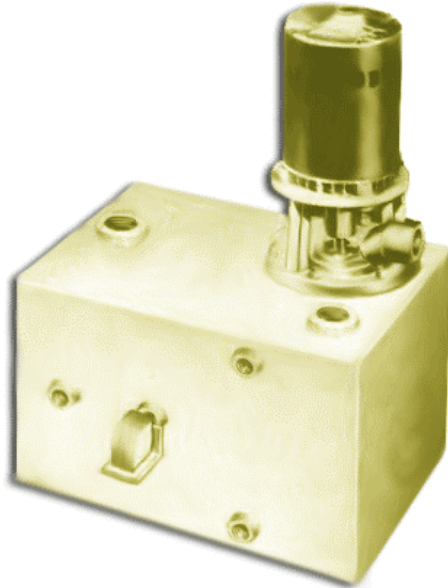
- **TWO STAGE**
  - **OPOSED IMPELLERS**
  - **BALL BEARINGS**
- FOR BOILER SERVICE FEED  
AND OTHER HIGH PRESSURE**

**QUICK PUMP SELECTOR****STANDARD**

- Stainless shaft sleeve
- Daralloy impellers
- Packed stuffing box
- Oil lubricated bearings
- Steel base
- Coupling guard
- 250 ANSI flange on discharge

**DARLING**

Since 1888

**LITTLE UNICON condensate  
pump and receiver  
1/3 HP, 20 PSI, 200°F****TROUBLE FREE HIGH TEMPERATURE PUMP**WITH SINGLE PHASE MOTORS  
(3 PHASE MOTORS NOT AVAILABLE)Unique self-contained "packaged" condensate return unit &  
low pressure boiler feed pumpPUMP MODEL NUMBER:  
SINGLEX 1 U 1/3  
DUPLEX 1 UD 1/3**EASY TO SELECT  
SELECTION TABLE**

PUMP CAPACITY USGPM	PRESSION PSI	SINGLEX		DUPLEX	
		Product No.	Receiver Size	Product No.	Receiver Size
4.5	10 15 20	58285	9 GALLON	58322	40 GALLON
9	10 15 18				
15	10 15	58286	40 GALLON		
22.5	10				

**UNIQUE**

- No gland or seal to service
- No leakage on the floor
- Permanent alignment

**RELIABLE**

- Minimum number of parts (one piece casting)
- Self-lubricated graphalloy bearing
- Built-in overload protection

**EFFICIENT**

- One piece rotating assembly including stainless steel shaft and all brass Duro impeller
- 3500 RPM jet pump motor

**EASY TO INSTALL**

- Factory assembled and wired
- No overhead tank
- No foundation nor alignment

**For unit selection:**

- 1) Calculate your system capacity and convert it to pump capacity.
- 2) Calculate your pressure requirement. Do not add safety factor.
- 3) Enter the selection table and determine product No. and receiver size.

**CAPACITY CONVERSION TABLE**

SYSTEM CAPACITY				PUMP CAPACITY USGPM
SQUARE FT. EDR	STEAM LBS/HR	CONDENSATE USGPM	APPROX. BOILER HP	
3,000	750	1.5	30	4.5
6,000	1,500	3.0	60	9
10,000	2,500	5.0	100	15
15,000	3,750	7.5	150	22.5