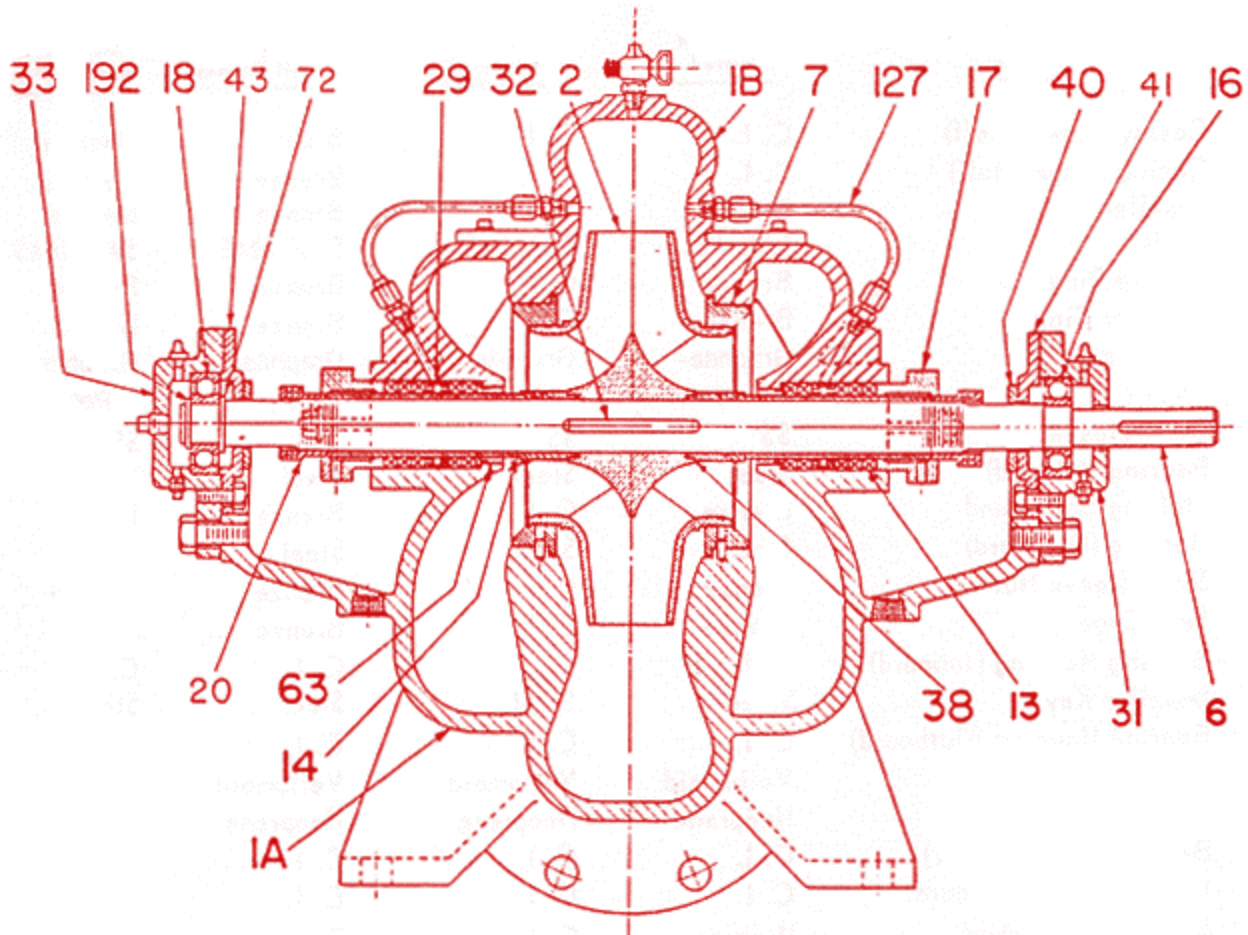


DARLING

Since 1888

**CLASS 'WL'
PARTS LIST****DOUBLE SUCTION WITH STUFFING BOX**

Item No.	Name	Item No.	Name
↑ 1A	CASING (LOWER HALF)	31	BEARING HOUSING (INBOARD)
↑ 1B	CASING (UPPER HALF)	● 32	IMPELLER KEY
● 2	IMPELLER	33	BEARING HOUSING (OUTBOARD)
● 6	SHAFT	● 38	SHAFT SLEEVE GASKET
● 7	CASING RING	40	DEFLECTOR (LIQUID)
⚡ 8	IMPELLER RING (NOT SHOWN)	41	BEARING CAP (INBOARD)
● 13	PACKING	43	BEARING CAP (OUTBOARD)
● 14	SHAFT SLEEVE	63	STUFFING BOX BUSHING
● 16	BEARING (INBOARD)	72	THRUST COLLAR
● 17	STUFFING BOX GLAND	● 73	CASING GASKET – SUCTION SIDE (NOT SHOWN)
● 18	BEARING (OUTBOARD)	● 73A	CASING GASKET – DISCHARGE SIDE (NOT SHOWN)
● 20	SHAF SLEEVE NUT	127	SEAL PIPING
29	SEAL CAGE	192	RETAINING RING (BEARING)

↑ Furnished only in pairs as complete unit

● For domestic service we recommend these parts be carried in stock as spares

⚡ Double wearing rings furnished as standard equipment on 8" and larger pumps all others as special equipment only.

WHEN WRITING THE FACTORY REGARDING YOUR PUMP – ALWAYS INCLUDE SERIAL NUMBER

DARLING

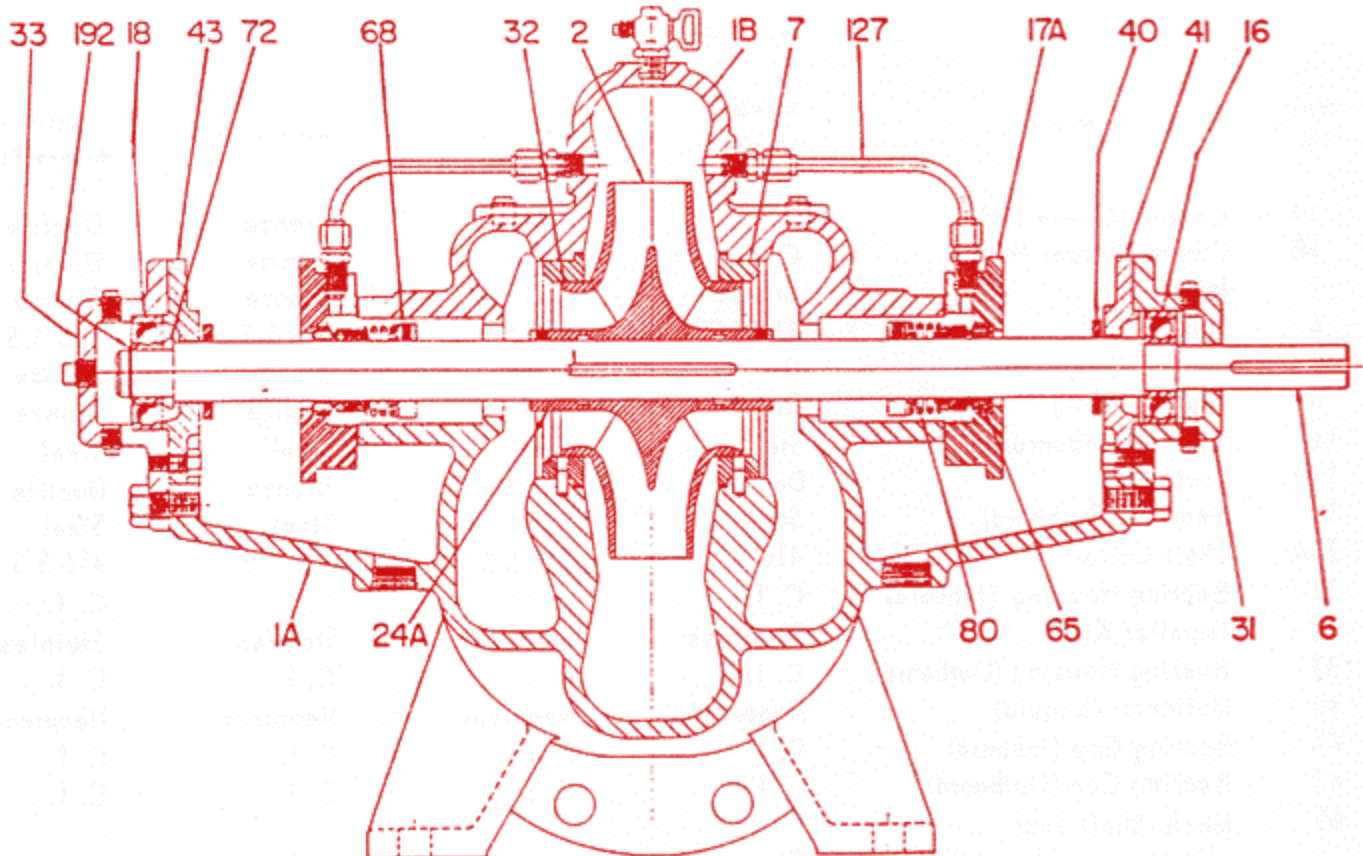
Since 1888

**CLASS 'WL'
PARTS LIST****MATERIAL OF CONSTRUCTION**

<u>Item No.</u>	<u>Name</u>	<u>Standard Fitted</u>	<u>All Iron</u>	<u>All Bronze</u>	<u>Ductile Iron Bronze Fitted</u>
1A	Casing (Lower Half)	C. I.	C. I.	Bronze	Ductile
1B	Casing (Upper Half)	C. I.	C. I.	Bronze	Ductile
2	Impeller	Bronze	C. I.	Bronze	Bronze
6	Shaft	SAE-1045	SAE-1045	SAE-1045	SAE-1045
7	Casing Ring	Bronze	C. I.	Bronze	Bronze
8	Impeller Ring	Bronze	C. I.	Bronze	Bronze
13	Packing	Graphite-Polymer	Graphite-Polymer	Graphite-Polymer	Graphite-Polymer
14	Shaft Sleeve	SS	SS	SS	SS
16	Bearing (Inboard)	Steel	Steel	Steel	Steel
17	Stuffing Box Gland	Bronze	C. I.	Bronze	Bronze
18	Bearing (Outboard)	Steel	Steel	Steel	Steel
20	Shaft Sleeve Nut	Bronze	C. I.	Bronze	Bronze
29	Seal Cage	Bronze	C. I.	Bronze	Bronze
31	Bearing Housing (Inboard)	C. I.	C. I.	C. I.	C. I.
32	Impeller Key	Steel	Steel	Steel	Steel
33	Bearing Housing (Outboard)	C. I.	C. I.	C. I.	C. I.
38	Shaft Sleeve Gasket	Vellumoid	Vellumoid	Vellumoid	Vellumoid
40	Deflector (Liquid)	Neoprene	Neoprene	Neoprene	Neoprene
41	Bearing Cap (Inboard)	C. I.	C. I.	C. I.	C. I.
43	Bearing Cap (Outboard)	C. I.	C. I.	C. I.	C. I.
63	Stuffing Box Bushing	Bronze	C. I.	Bronze	Bronze
72	Thrust Collar	Steel	Steel	Steel	Steel
73	Casing Gasket-Suction Side	Asbestos	Asbestos	Asbestos	Asbestos
73A	Casing Gasket-Disch. Side	Asbestos	Asbestos	Asbestos	Asbestos
127	Seal Piping	Copper	Steel	Copper	Copper
192	Retaining Ring (Bearing)	Steel	Steel	Steel	Steel

DARLING

Since 1888

**CLASS 'WL'
PARTS LIST****DOUBLE SUCTION WITH MECHANICAL SHAFT SEALS**

Item No.	Name	Item No.	Name
↑ 1A	CASING (LOWER HALF)	33	BEARING HOUSING (OUTBOARD)
↑ 1B	CASING (UPPER HALF)	40	DEFLECTOR (LIQUID)
● 2	IMPELLER	41	BEARING CAP (INBOARD)
● 6	SHAFT	43	BEARING CAP (OUTBOARD)
● 7	CASING RING	↑ ● 65	MECHANICAL SHAFT SEAL (STATIONARY ELEMENT)
↕ ● 8	IMPELLER RING (NOT SHOWN)	68	SEAL COLLAR
● 16	BEARING (INBOARD)	72	THRUST COLLAR
17A	SEAL CAP	● 73	CASING GASKET – SUCTION SIDE (NOT SHOWN)
● 18	BEARING (OUTBOARD)	● 73A	CASING GASKET – DISCHARGE SIDE (NOT SHOWN)
24A	SHAFT COLLAR	↑ ● 80	MECHANICAL SHAFT SEAL (ROTATING ELEMENT)
31	BEARING HOUSING (INBOARD)	127	SEAL PIPING
● 32	IMPELLER KEY	192	RETAINING RING (BEARING)

↑ Furnished only in pairs as complete unit

● For domestic service we recommend these parts be carried in stock as spares

↕ Double wearing rings furnished as standard equipment on 8" and larger pumps all others as special equipment only.

WHEN WRITING THE FACTORY REGARDING YOUR PUMP – ALWAYS INCLUDE SERIAL NUMBER

DARLING

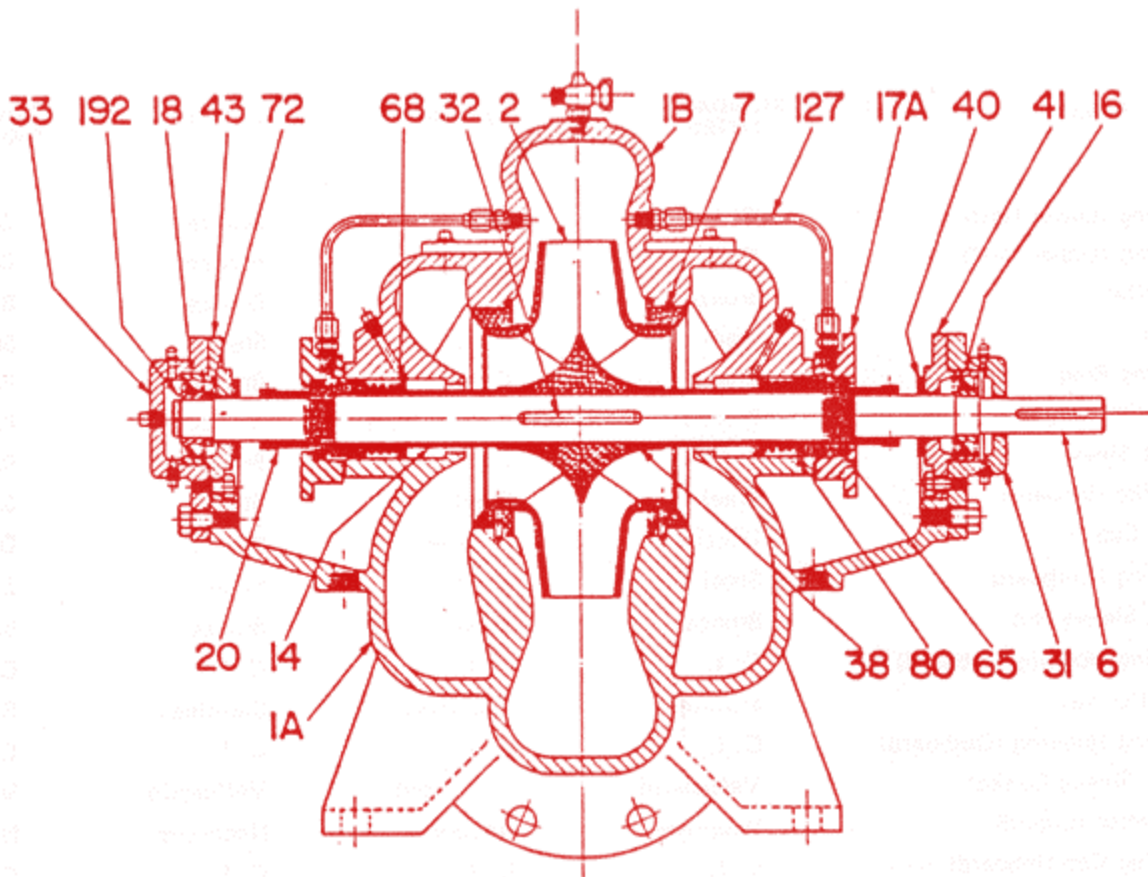
Since 1888

**CLASS 'WL'
PARTS LIST****MATERIAL OF CONSTRUCTION**

Item No.	Name	Standard Fitted	All Iron	All Bronze	Ductile Iron Bronze Fitted
1A	Casing (Lower Half)	C. I.	C. I.	Bronze	Ductile
1B	Casing (Upper Half)	C. I.	C. I.	Bronze	Ductile
2	Impeller	Bronze	C. I.	Bronze	Bronze
6	Shaft	416 S.S.	416 S.S.	416 S.S.	416 S.S.
7	Casing Ring	Bronze	C. I.	Bronze	Bronze
8	Impeller Ring	Bronze	C. I.	Bronze	Bronze
16	Bearing (Inboard)	Steel	Steel	Steel	Steel
17A	Seal Cap	Ductile	Ductile	Bronze	Ductile
18	Bearing (Outboard)	Steel	Steel	Steel	Steel
24A	Shaft Collar	416 S.S.	416 S.S.	416 S.S.	416 S.S.
31	Bearing Housing (Inboard)	C. I.	C. I.	C. I.	C. I.
32	Impeller Key	Stainless	Stainless	Stainless	Stainless
33	Bearing Housing (Outboard)	C. I.	C. I.	C. I.	C. I.
40	Deflector (Liquid)	Neoprene	Neoprene	Neoprene	Neoprene
41	Bearing Cap (Inboard)	C. I.	C. I.	C. I.	C. I.
43	Bearing Cap (Outboard)	C. I.	C. I.	C. I.	C. I.
65	Mech. Shaft Seal (Stationary Element)	Ceramic	Ceramic	Ceramic	Ceramic
68	Seal Collar	Bronze	Steel	Bronze	Bronze
72	Thrust Collar	Steel	Steel	Steel	Steel
73	Casing Gasket-Suction Side	Asbestos	Asbestos	Asbestos	Asbestos
73A	Casing Gasket Disch. Side	Asbestos	Asbestos	Asbestos	Asbestos
80	Mech. Shaft Seal (Rotating Element)	Carbon	Carbon	Carbon	Carbon
127	Seal Piping	Copper	Steel	Copper	Copper
192	Retaining Ring (Bearing)	Steel	Steel	Steel	Steel

DARLING

Since 1888

**CLASS 'WL'
PARTS LIST****DOUBLE SUCTION WITH MECHANICAL SHAFT SEALS & SHAFT SLEEVE**

Item No.	Name	Item No.	Name
↑ 1A	CASING (LOWER HALF)	33	BEARING HOUSING (OUTBOARD)
↑ 1B	CASING (UPPER HALF)	38	SHAFT SLEEVE GASKET
● 2	IMPELLER	40	DEFLECTOR (LIQUID)
● 6	SHAFT	41	BEARING CAP (INBOARD)
● 7	CASING RING	43	BEARING CAP (OUTBOARD)
⚡ 8	IMPELLER RING (NOT SHOWN)	↑ ● 65	MECHANICAL SHAFT SEAL (STATIONARY ELEMENT)
● 14	SHAFT SLEEVE	68	SEAL COLLAR
● 16	BEARING (INBOARD)	72	THRUST COLLAR
17A	SEAL CAP	● 73	CASING GASKET – SUCTION SIDE (NOT SHOWN)
● 18	BEARING (OUTBOARD)	● 73A	CASING GASKET – DISCHARGE SIDE (NOT SHOWN)
24A	SHAFT COLLAR	↑ ● 80	MECHANICAL SHAFT SEAL (ROTATING ELEMENT)
● 31	BEARING HOUSING (INBOARD)	127	SEAL PIPING
● 32	IMPELLER KEY	192	RETAINING RING (BEARING)

↑ Furnished only in pairs as complete unit

● For domestic service we recommend these parts be carried in stock as spares

⚡ Double wearing rings furnished as standard equipment on 8" and larger pumps all others as special equipment only.

WHEN WRITING THE FACTORY REGARDING YOUR PUMP – ALWAYS INCLUDE SERIAL NUMBER

DARLING

Since 1888

**CLASS 'WL'
PARTS LIST****MATERIAL OF CONSTRUCTION**

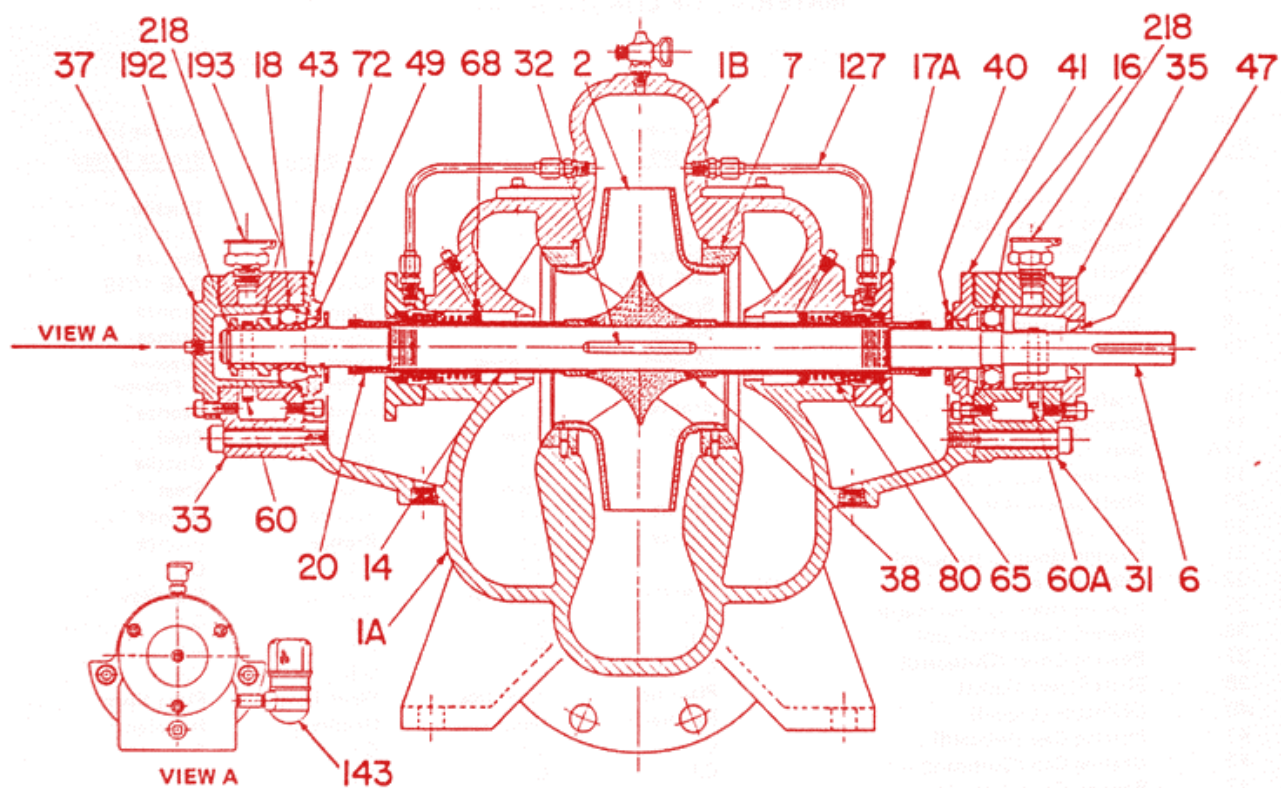
ITEM NO.	NAME	STANDARD FITTED	ALL IRON	ALL BRONZE	DUCTILE IRON BRONZE FITTED
1A	Casing (Lower Half)	C. I.	C. I.	Bronze	Ductile
1B	Casing (Upper Half)	C. I.	C. I.	Bronze	Ductile
2	Impeller	Bronze	C. I.	Bronze	Bronze
6	Shaft	Steel	Steel	Steel	Steel
7	Casing Ring	Bronze	C. I.	Bronze	Bronze
8	Impeller Ring	Bronze	C. I. – Steel	Bronze	Bronze
14	Shaft Sleeve	Bronze	C. I.	Bronze	Bronze
16	Bearing (Inboard)	Steel	Steel	Steel	Steel
17A	Seal Cap	Ductile	Ductile	Bronze	Ductile
18	Bearing (Outboard)	Steel	Steel	Steel	Steel
20	Shaft Sleeve Nut	Bronze	Steel	Bronze	Bronze
31	Bearing Housing (Inboard)	C. I.	C. I.	C. I.	C. I.
32	Impeller Key	Stainless	Stainless	Stainless	Stainless
33	Bearing Housing (Outboard)	C. I.	C. I.	C. I.	C. I.
38	Shaft Sleeve Gasket	Vellumoid	Vellumoid	Vellumoid	Vellumoid
40	Deflector (Liquid)	Neoprene	Neoprene	Neoprene	Neoprene
41	Bearing Cap (Inboard)	C. I.	C. I.	C. I.	C. I.
43	Bearing Cap (Outboard)	C. I.	C. I.	C. I.	C. I.
65	Mechanical Shaft Seal (Stationary Element)	Ceramic	Ceramic	Ceramic	Ceramic
68	Seal Collar	Bronze	Steel	Bronze	Bronze
72	Thrust Collar	Steel	Steel	Steel	Steel
73	Casing Gasket – Suction Side	Asbestos	Asbestos	Asbestos	Asbestos
73A	Casing Gasket – Discharge Side	Asbestos	Asbestos	Asbestos	Asbestos
80	Mechanical Shaft Seal (Rotating Element)	Carbon	Carbon	Carbon	Carbon
127	Seal Piping	Copper	Steel	Copper	Copper
192	Retaining Ring (Bearing)	Steel	Steel	Steel	Steel

DARLING

Since 1888

**CLASS 'WL'
PARTS LIST****DOUBLE SUCTION WITH OIL LUBRICATED BEARINGS**

(With Mechanical Shaft Seal)



Item No.	Name	Item No.	Name
↑ 1A	CASING (LOWER HALF)	43	BEARING CAP (OUTBOARD)
↑ 1B	CASING (UPPER HALF)	● 47	BEARING COVER SEAL (INBOARD)
● 2	IMPELLER	● 49	BEARING CAP SEAL
● 6	SHAFT	● 60	OIL RING (OUTBOARD)
● 7	CASING RING	● 60A	OIL RING (INBOARD)
⚡ 8	IMPELLER RING (NOT SHOWN)	↑ ● 65	MECHANICAL SHAFT SEAL (STATIONARY ELEMENT)
● 14	SHAFT SLEEVE	68	SEAL COLLAR
● 16	BEARING (INBOARD)	72	THRUST COLLAR
17A	SEAL CAP	● 73	CASING GASKET – SUCTION SIDE (NOT SHOWN)
● 18	BEARING (OUTBOARD)	● 73A	CASING GASKET – DISCHARGE SIDE (NOT SHOWN)
20	SHAFT SLEEVE	↑ ● 80	MECHANICAL SHAFT SEAL (ROTATING ELEMENT)
31	BEARING HOUSING (INBOARD)	127	SEAL PIPING
● 32	IMPELLER KEY	143	CONSTANT LEVEL OILER
33	BEARING HOUSING (OUTBOARD)	192	RETAINING RING (BEARING)
35	BEARING COVER (INBOARD)	193	RING GUIDE
37	BEARING COVER (OUTBOARD)	● 194	BEARING HOUSING GASKETS (INBOARD)
38	SHAFT SLEEVE GASKET	● 195	BEARING HOUSING GASKETS (OUTBOARD)
40	DEFLECTOR (LIQUID)	218	OIL CAP
41	BEARING CAP (INBOARD)		

↑ Furnished only in pairs as complete unit

● For domestic service we recommend these parts be carried in stock as spares

⚡ Double wearing rings furnished as standard equipment on 8" and larger pumps all others as special equipment only.

WHEN WRITING THE FACTORY REGARDING YOUR PUMP – ALWAYS INCLUDE SERIAL NUMBER

DARLING

Since 1888

**CLASS 'WL'
PARTS LIST****MATERIAL OF CONSTRUCTION**

<u>Item No.</u>	<u>Name</u>	<u>Standard Fitted</u>	<u>All Iron</u>	<u>All Bronze</u>	<u>Ductile Iron Bronze Fitted</u>
1A	Casing (Lower Half)	C.I.	C.I.	Bronze	Ductile
1B	Casing (Upper Half)	C.I.	C.I.	Bronze	Ductile
2	Impeller	Bronze	C.I.	Bronze	Bronze
6	Shaft	SAE 1045	SAE 1045	SAE 1045	SAE 1045
7	Casing Ring	Bronze	C.I.	Bronze	Bronze
8	Impeller Ring	Bronze	C.I.	Bronze	Bronze
13	Packing	Graphite-Polymer	Graphite-Polymer	Graphite-Polymer	Graphite-Polymer
14	Shaft Sleeve	Bronze*	C.I.	Bronze*	Bronze*
16	Bearing (Inboard)	Steel	Steel	Steel	Steel
17A	Seal Cap	C.I.	C.I.	Bronze	Ductile
18	Bearing (Outboard)	Steel	Steel	Steel	Steel
20	Shaft Sleeve Nut	Bronze	C.I.	Bronze	Bronze
29	Seal Cage	Bronze	C.I.	Bronze	Bronze
31	Bearing Housing (Inboard)	C.I.	C.I.	C.I.	C.I.
32	Impeller Key	Stainless	Stainless	Stainless	Stainless
33	Bearing Housing (Outboard)	C.I.	C.I.	C.I.	C.I.
35	Bearing Cover (Inboard)	C.I.	C.I.	C.I.	C.I.
37	Bearing Cover (Outboard)	C.I.	C.I.	C.I.	C.I.
38	Shaft Sleeve Gasket	Plant fiber	Plant fiber	Plant fiber	Plant fiber
40	Deflector (Liquid)	Neoprene	Neoprene	Neoprene	Neoprene
41	Bearing Cap (Inboard)	C.I.	C.I.	C.I.	C.I.
43	Bearing Cap (Outboard)	C.I.	C.I.	C.I.	C.I.
47	Bearing Cover Seal (Inboard)	Leather	Leather	Leather	Leather
49	Bearing Cap Seals	Leather	Leather	Leather	Leather
60	Oil Ring (Outboard)	Brass	Brass	Brass	Brass
60A	Oil Ring (Inboard)	Brass	Brass	Brass	Brass
63	Stuffing Box Bushing	Brass	Steel	Brass	Brass
65	Mechanical Shaft Seal (Stationary Element)	Ceramic	Ceramic	Ceramic	Ceramic
72	Thrust Collar	Steel	Steel	Steel	Steel
73	Casing Gasket - Suction Side	Plant fiber	Plant fiber	Plant fiber	Plant fiber
73A	Casing Gasket - Disch. Side	Plant fiber	Plant fiber	Plant fiber	Plant fiber
80	Mechanical Shaft Seal (Rotating Element)	Carbon	Carbon	Carbon	Carbon
127	Seal Piping	Nylon	Nylon	Nylon	Nylon
143	Sight Oil Gauge	Brass	Brass	Brass	Brass
192	Retaining Ring (Bearing)	Steel	Steel	Steel	Steel
193	Ring Guide	Steel	Steel	Steel	Steel
194	Bearing Housing Gaskets (Inboard)	Plant fiber	Plant fiber	Plant fiber	Plant fiber
195	Bearing Housing Gaskets (Outboard)	Plant fiber	Plant fiber	Plant fiber	Plant fiber

*Aluminum Bronze, 235 Brinell

ASTM B148-49 (9C) H.T.